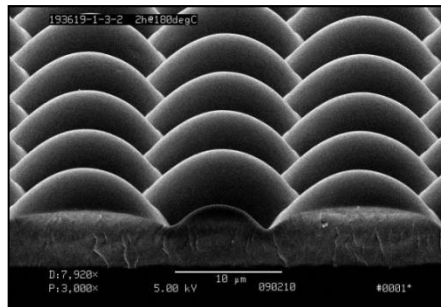
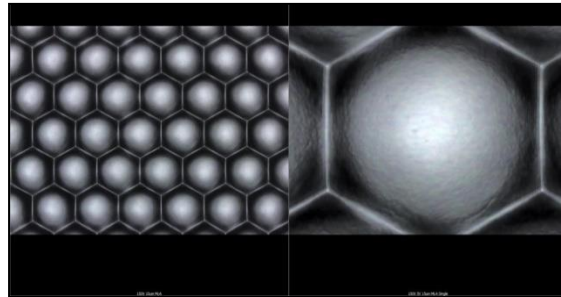


Microlens Array (MLA) Sample

Microlens Array (MLA) Sampler Properties

Microlens Array Area:	50mm square
Substrate Size:	76.2mm square*
Substrate Material:	1.1mm Corning Eagle XG glass*
MLA Material:	Polymer-on-glass
Refractive Index:	1.51* @ 633nm
Transmission Spectrum:	400-2200nm
MLA Pitch:	15um
Lenslet ROC:	~ 8um
Lenslet Curvature:	Convex*
Price:	\$495. USD**
*Other options upon request	
** Pricing is for US based companies with approved credit only. Other charges may apply.	



[Order Sample](#)

