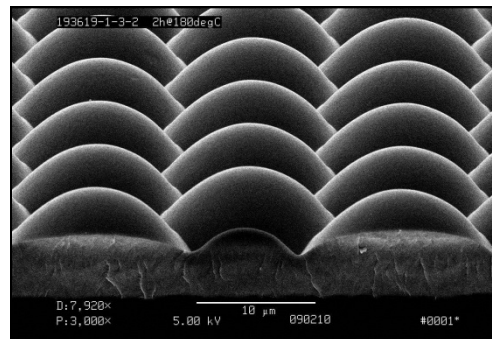
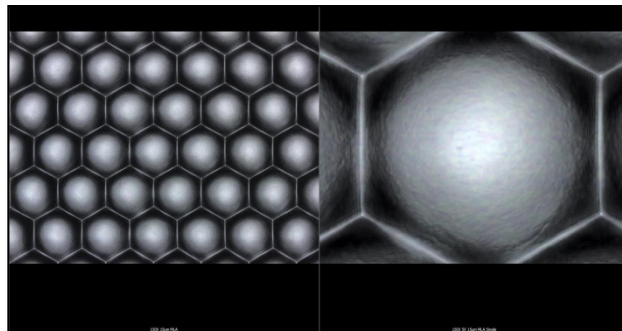


Microlens Array (MLA) Sample

Microlens Array (MLA) Sample Properties

Microlens Array Area:	50mm square
Substrate:	76.2mm square, 3.3mm thick Borofloat glass or 1.1mm Corning EagleXG glass
MLA Pitch:	15um
MLA Packing:	Hexagonal close-packed
Lenslet Curvature:	Spherical, Convex or Spherical, Concave
Lenslet ROC:	~ 8um
MLA Refraction Index:	1.5 or 1.6
Price:	\$495. USD



[Order Sample](#)